

Getting Out of Town: Morgantown's Interstate Connections

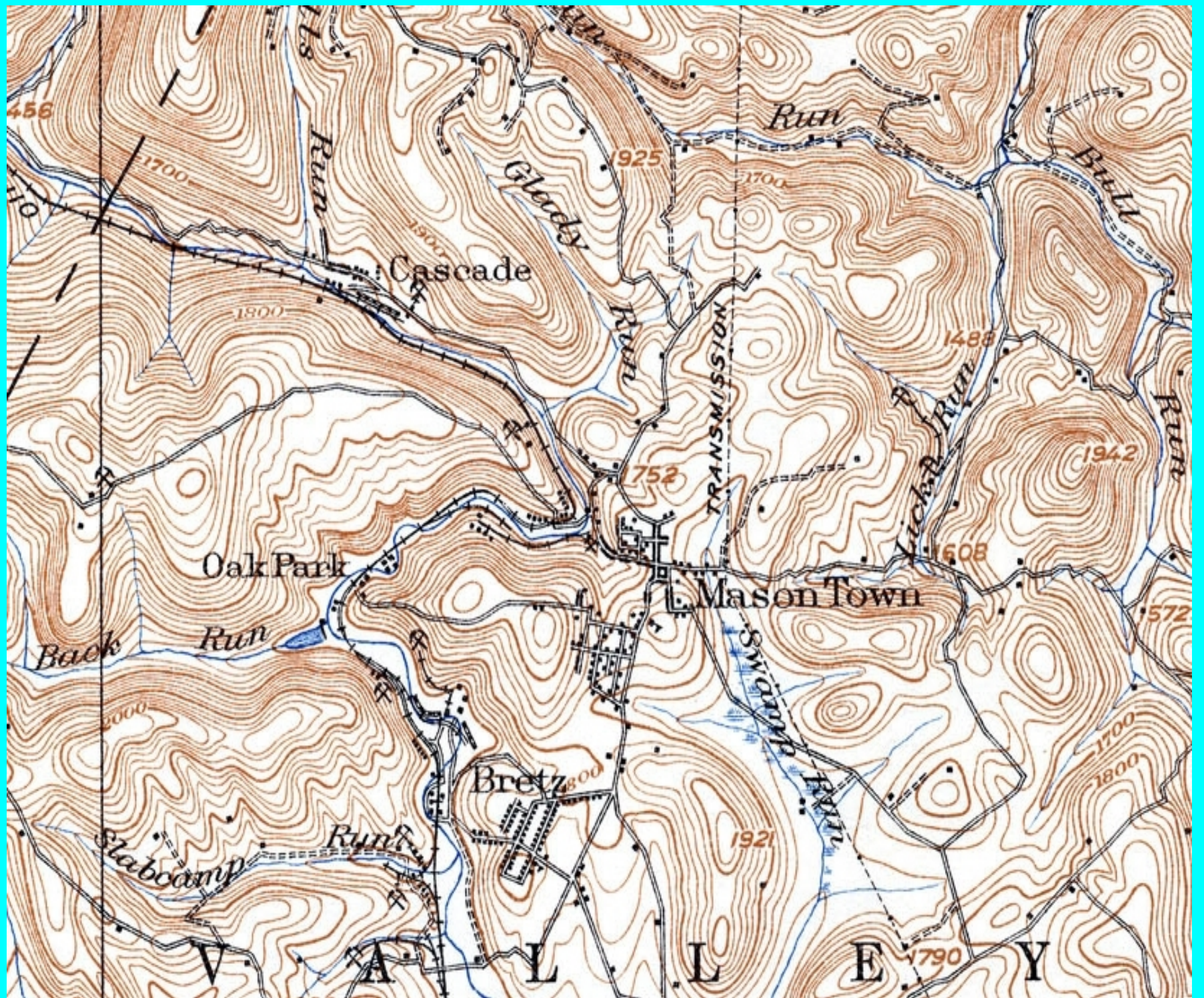


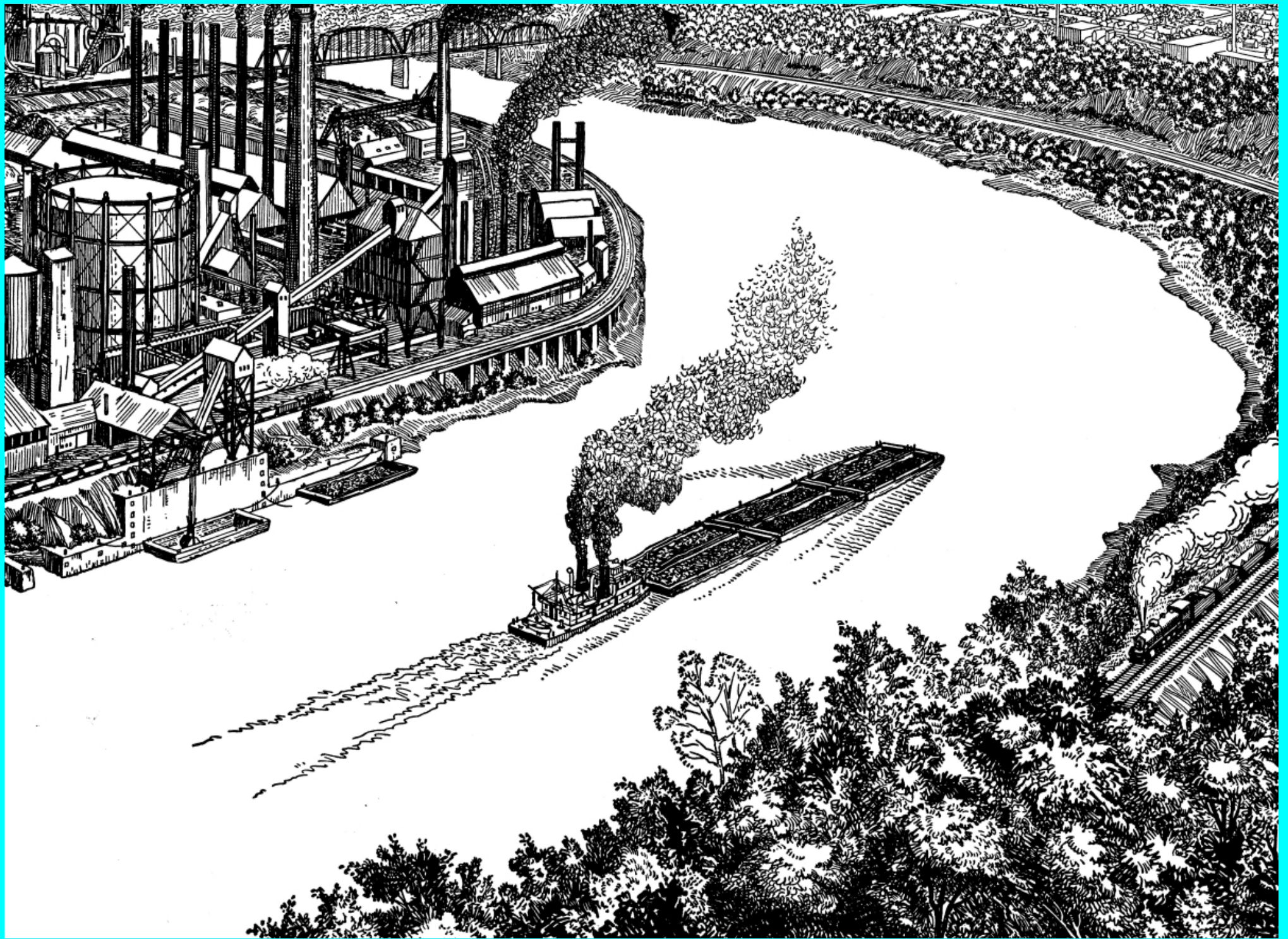
EN ROUTE.
OLLI @ WVU – Winter 2012

Wally Venable

Mechanical & Aerospace Engineering, WVU







River Improvements

Slackwater to Fairmont

- Locks 10 to 15 funded 1892, opened 1903
- End of packet trade, growth of barge traffic
- Locks too small – “split” lockage
- Shortage of water



Mon.R., Lock 12

Upper pool 6'6" below crest.

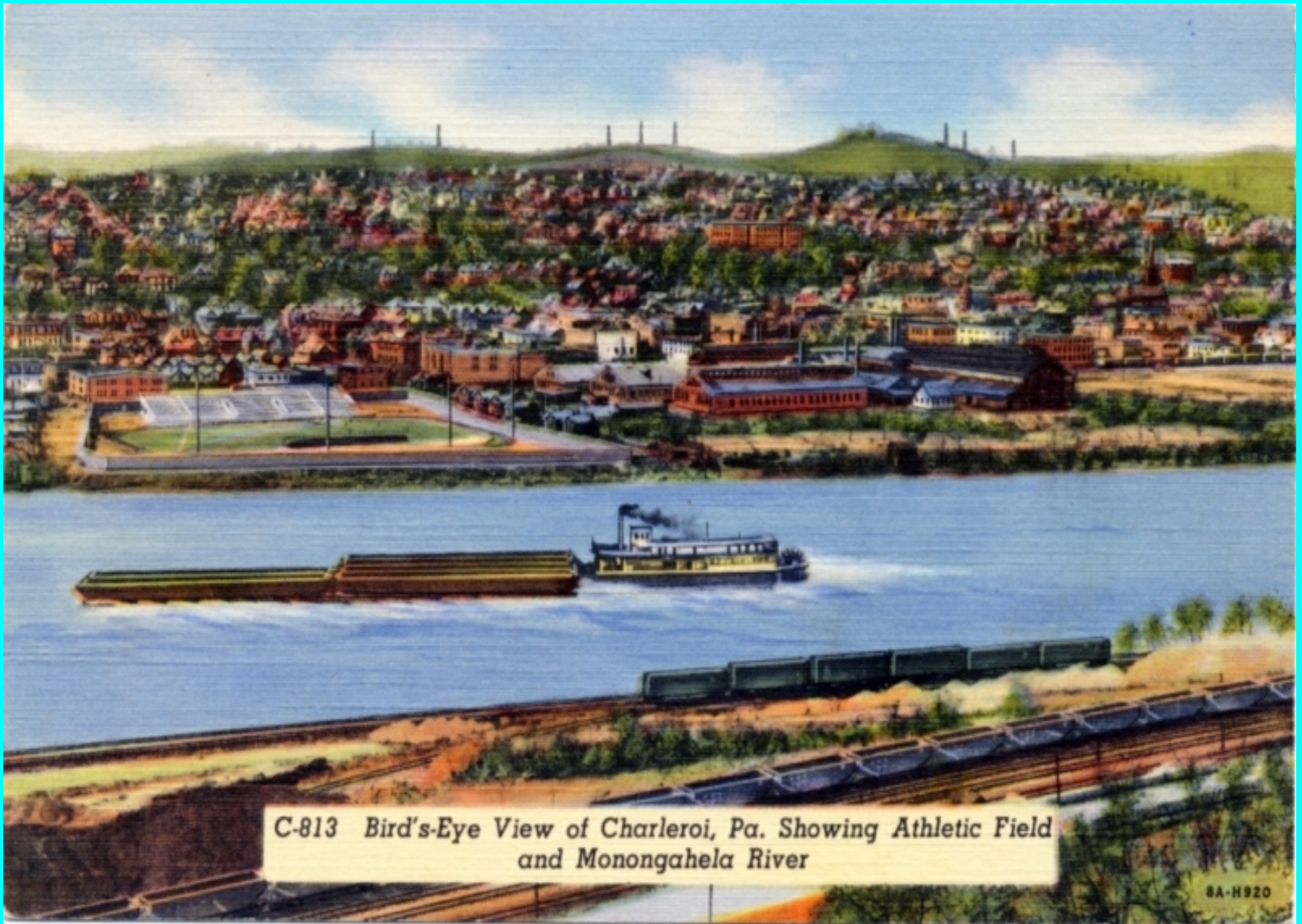
U.S.E.O., Pgh., Pa. - Oct. 2, 1930.

5778



Tygart Valley Flood Control Dam on Tygart River near Grafton and Clarksburg, W. Va.





C-813 *Bird's-Eye View of Charleroi, Pa. Showing Athletic Field and Monongahela River*



River Improvements

Locks too small – “split” lockage

Morgantown L&D – opened July 1950

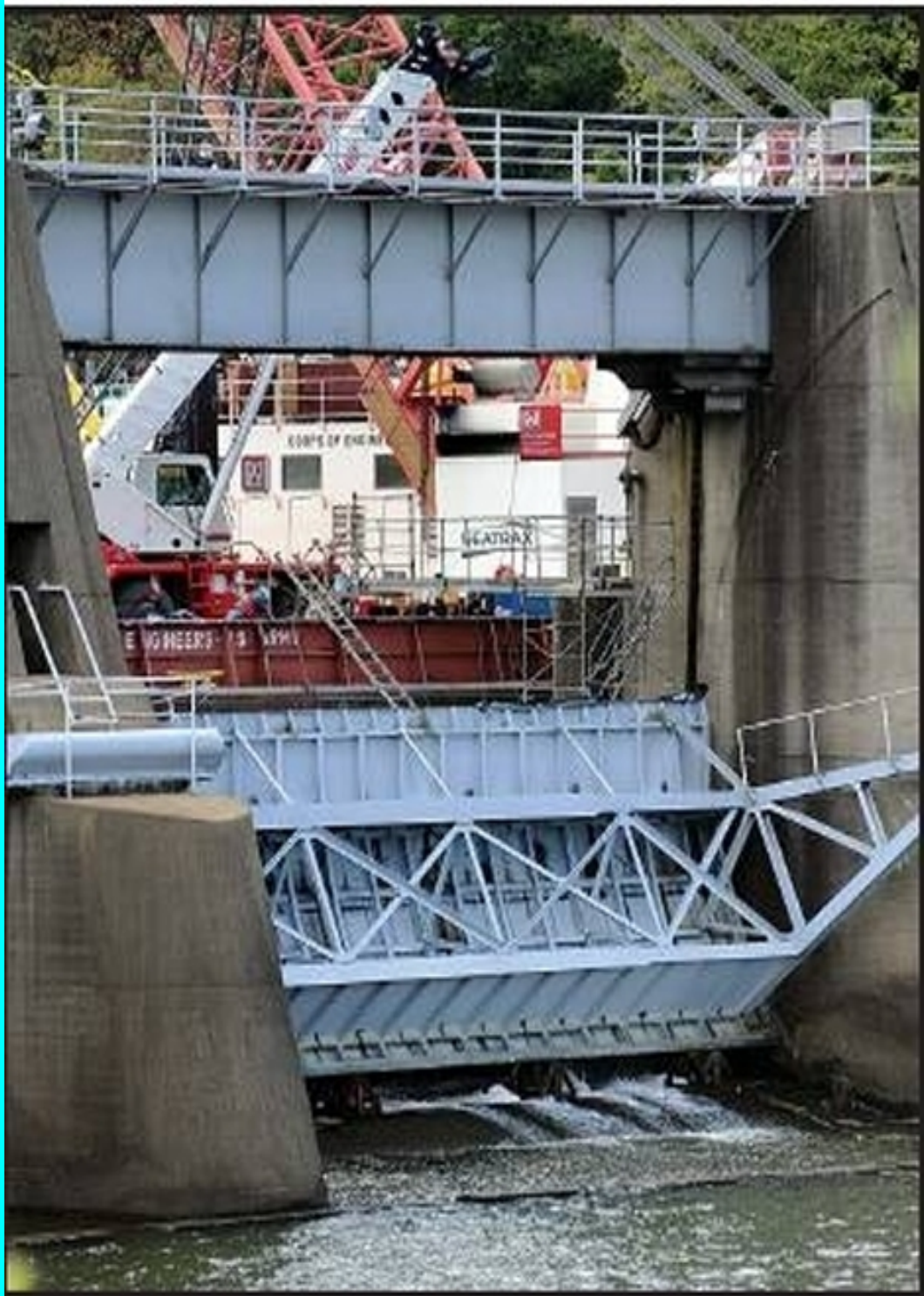
Hildebrand L&D – opened June 1959

Opekiska L&D – opened August 1964

Gray's Landing L&D -

Point Marion Lock -













Road Improvements

- 1891 - Capitation Tax on males over 21 of \$1.00
- 1891 - County Court could levy real and personal property taxes for roads
- 1891 - Rural Free Delivery instituted program accompanied by "demonstration road" construction under Federal funding
- 1907 WV authorized County Court to macadamize abandoned toll roads and turnpikes and to condemn land for road construction



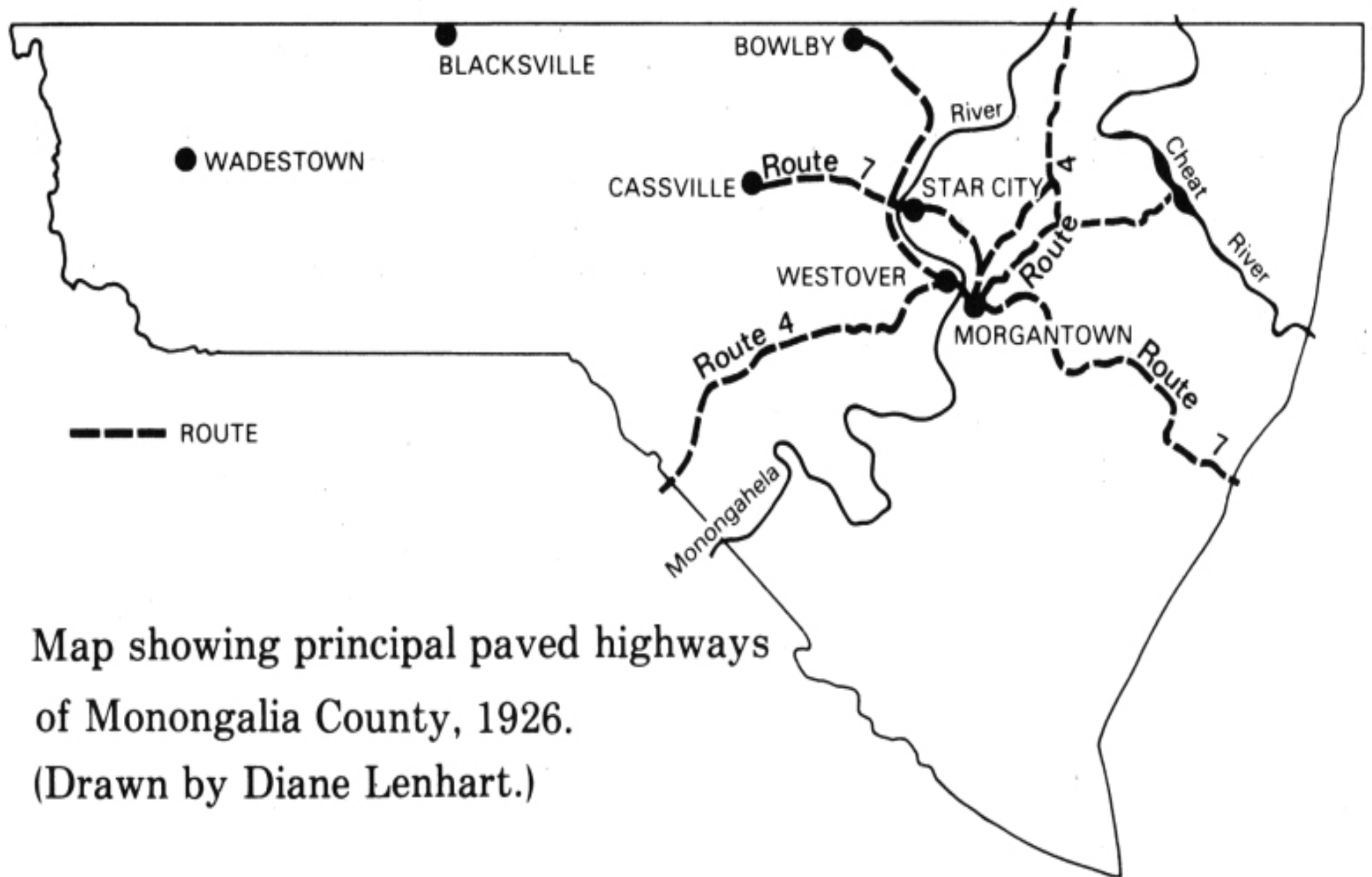
Road Improvements

- 1907 - First state aid for road construction
- 1907 - First Commissioner of Public Roads
- 1907 - First "demonstrations" of "Split log drags" predecessor of steel drags
- 1907 - First auto tags and other property taxes on automobiles
- 1910 - only paved county roads were short sections near Clarksburg, Parkersburg, Huntington, and Wheeling
- 1914 - first Road School held at WVU - 10 days long - 150 engineers attended



Road Improvements

- 1932 - State of WV accepts responsibility for State Roads
- 1907 - First Commissioner of Public Roads
- 1907 - First "demonstrations" of "Split log drags" predecessor of steel drags
- 1921 – Better Roads Amendment
 - State Road Commission
 - State Roads
 - County Roads



Map showing principal paved highways
of Monongalia County, 1926.
(Drawn by Diane Lenhart.)

SR 7 – circa 1925



SR 7 – Deckers Creek – circa 1925





Road building on Route 7, 1929.

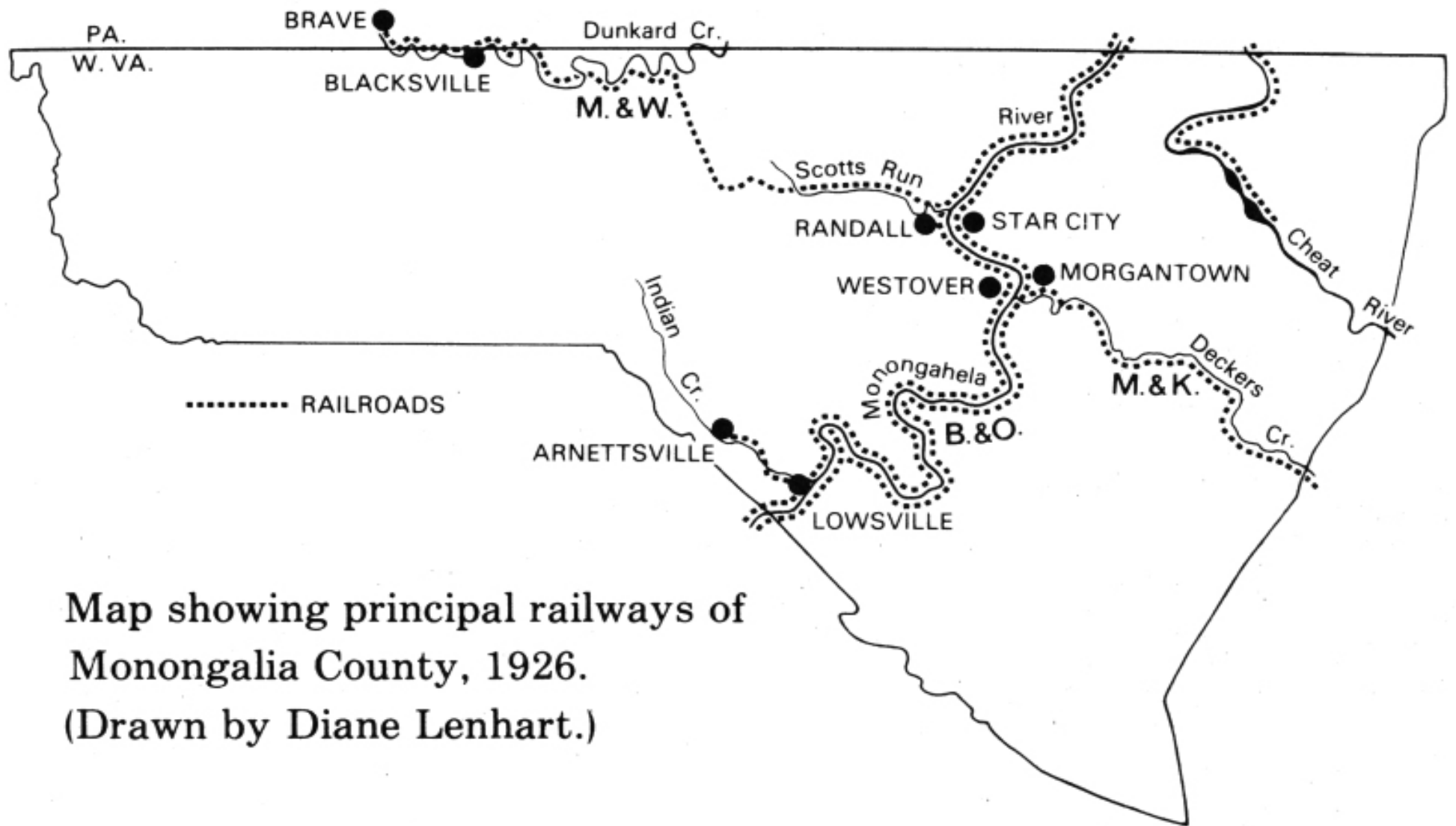


Morgantown,
W. Va.



Railroads

- 1877 - Railroad still 25 miles away
- 1884 - Stage to Fairmont - 4 to 5 hours
- 1885 - Station and Deckers Creek Bridge in Morgantown - rails from Fairmont reached Little Falls
- 1886 - February – train service to Fairmont
- 2 April 1894 through service to Pittsburgh - 101 miles 4-1/2 hours



Map showing principal railways of
Monongalia County, 1926.
(Drawn by Diane Lenhart.)





Air Travel

- Site off Tyrone Road where Imperial View exists today
- Site of the Lakeview golf course
- Morgan Field – Coliseum area
 - Lease from Suncrest House Company
 - Opened on August 3, 1929

Morgan Field





Air Travel – Hart Field

- July 1935 the Chamber of Commerce appointed an Airport Committee
- Between 1934 and 1936 sizable acreage near the Mileground was purchased
- October 1935, with Federal funding, construction of the proposed airport was begun as a WPA project
- November 9, 1937 work was completed and the field opened as the Morgantown Municipal Airport

Hart Field



The Works Progress Administration (WPA) provided funds during the Great Depression from 1935 through 1937 for developing the site of the present Morgantown Airport. Much of the labor was done with picks and shovels, providing income for financially needy families.

Hart Field





Air Travel – Hart Field

- July 14, 1962 groundbreaking for new terminal building, flight service center and University hanger
- September 20, 1964 President Lyndon Johnson spoke to about 25,000 people at the dedication of the new facilities.









1956 - Interstate Highway Act



Interstate 79

- First piece of I-79 in West Virginia, between Exits 125 (Saltwell Road) and 132 (South Fairmont), opened on December 21, 1967
- Construction in PA between WV-PA line and Waynesburg started c. 1968
- Uffington Bridge opened on August 30, 1973
- Two lanes from exit 155 (Osage) north to the state line opened February 1, 1974

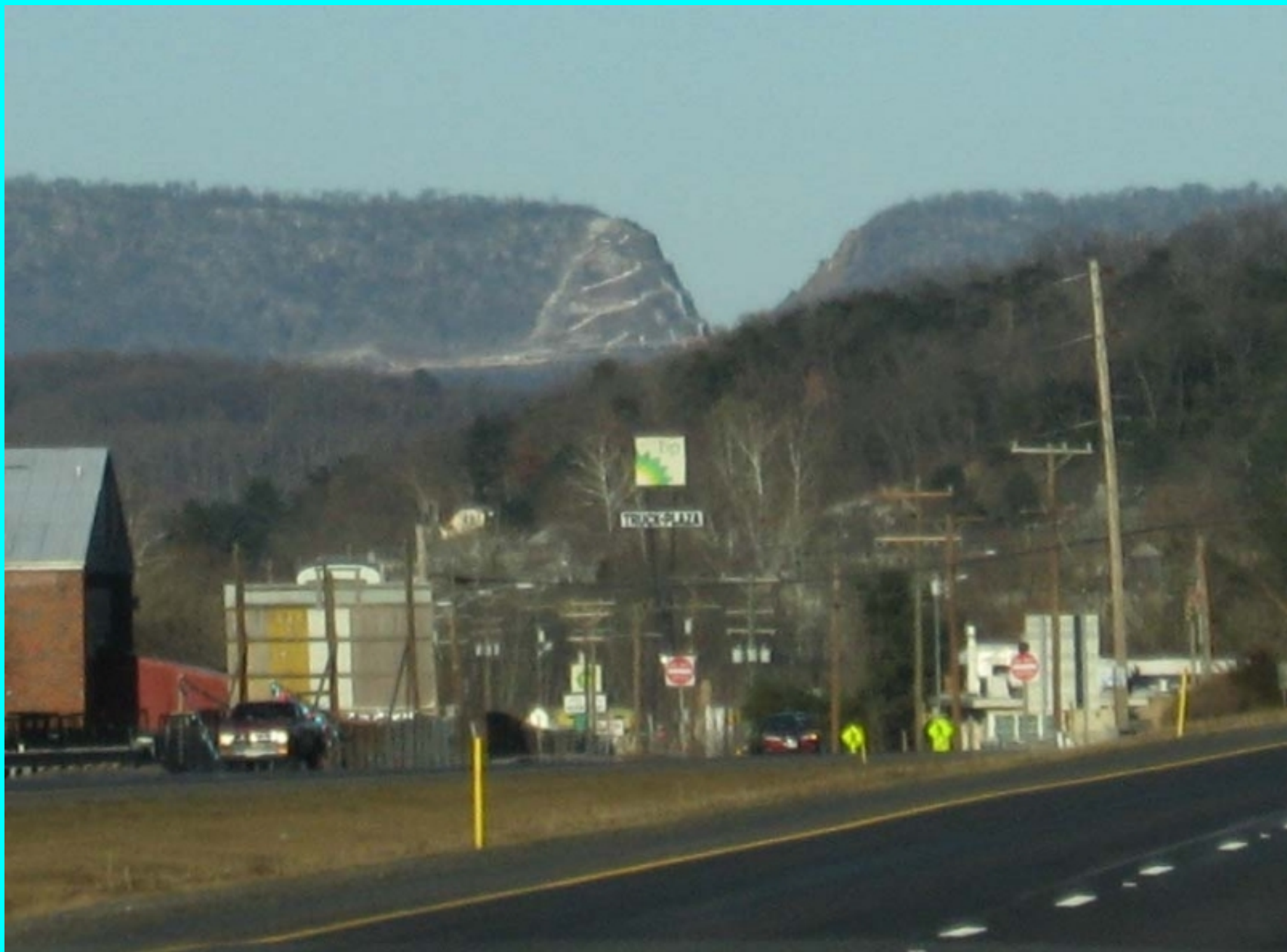
Interstate 79

- Neville Island Bridge over the Ohio River - opened September 3, 1976
- Finally completed in 1979



Interstate 68

- Corridor E – 1965 - Appalachian Development Act authorized - meant to provide access to areas throughout the Appalachian Mountains that were not previously served by the Interstate Highway System
- The construction of I-68 began in 1965 and continued for over 25 years, with completion on August 2, 1991





Given the State of the
Transportation System, Why
Would You be Coming From,
or Going To, Monongalia
County in 2012?

Getting Out of Town: Morgantown's Interstate Connections



OLLI @ WVU – Winter 2012

Wally Venable

Mechanical & Aerospace Engineering, WVU