

# Getting Out of Town: Morgantown's Interstate Connections



**OLLI @ WVU – Winter 2012**

**Wally Venable**

**Mechanical & Aerospace Engineering, WVU**

My website

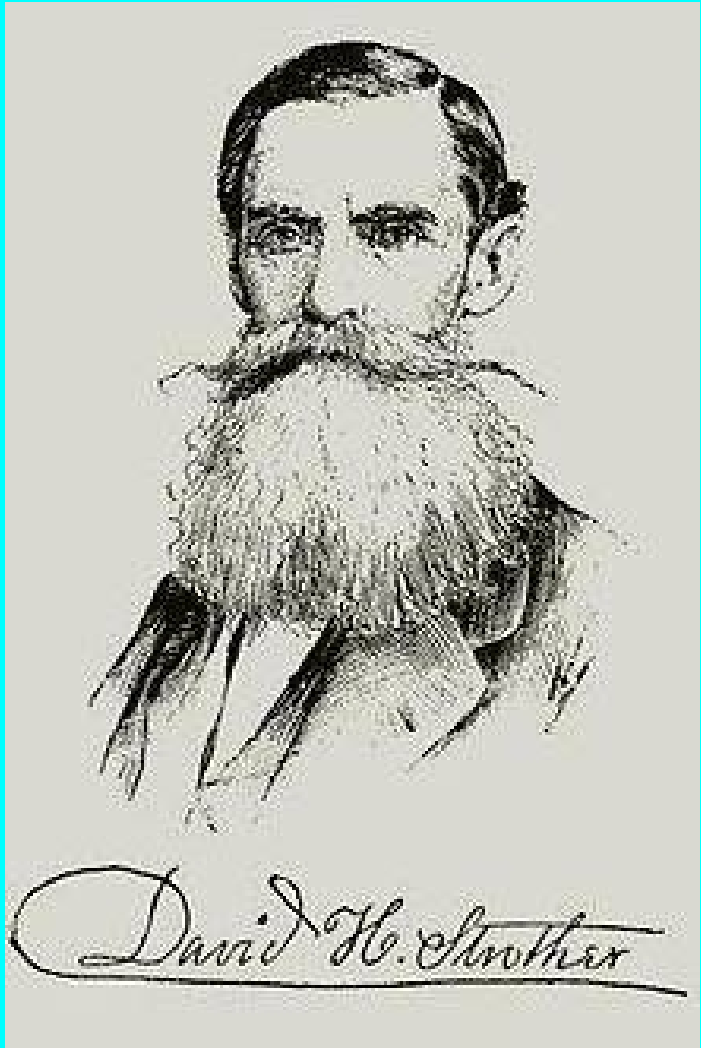
[Www.Wallace-Venable.name](http://www.Wallace-Venable.name)

No class 10 February

Why Would You be Coming  
From, or Going To,  
Monongalia County?

Given the State of the  
Transportation System, Why  
Would You be Coming From,  
or Going To, Monongalia  
County in 1760?

# David Struther – *"Porte Crayon"*



1816 – 1888

American magazine illustrator  
and writer

Born Martinsburg, Virginia

Studied art Philadelphia, New  
York, Europe

# The Early Years – 1750 to 1850

- 1753 - Col. Geo. Washington
- 1753 - Dunkards named Eckerlin
- 1763 – Mason-Dixon Survey
- 1765 - Jeremiah Glasgow settles at present Mount Morris
- 1768 - Zackwell Morgan settles Morgans Town

A MAP OF  
**PENNSYLVANIA**

EXHIBITING

not only THE IMPROVED PARTS of that PROVINCE, but also

ITS EXTENSIVE FRONTIERS:

Laid down FROM ACTUAL SURVEYS,

and Chiefly FROM THE LATE MAP of W. Scull Published in 1770.

And Humbly Inscribed

TO THE HONOURABLE

THOMAS PENN AND RICHARD PENN ESQUIRES

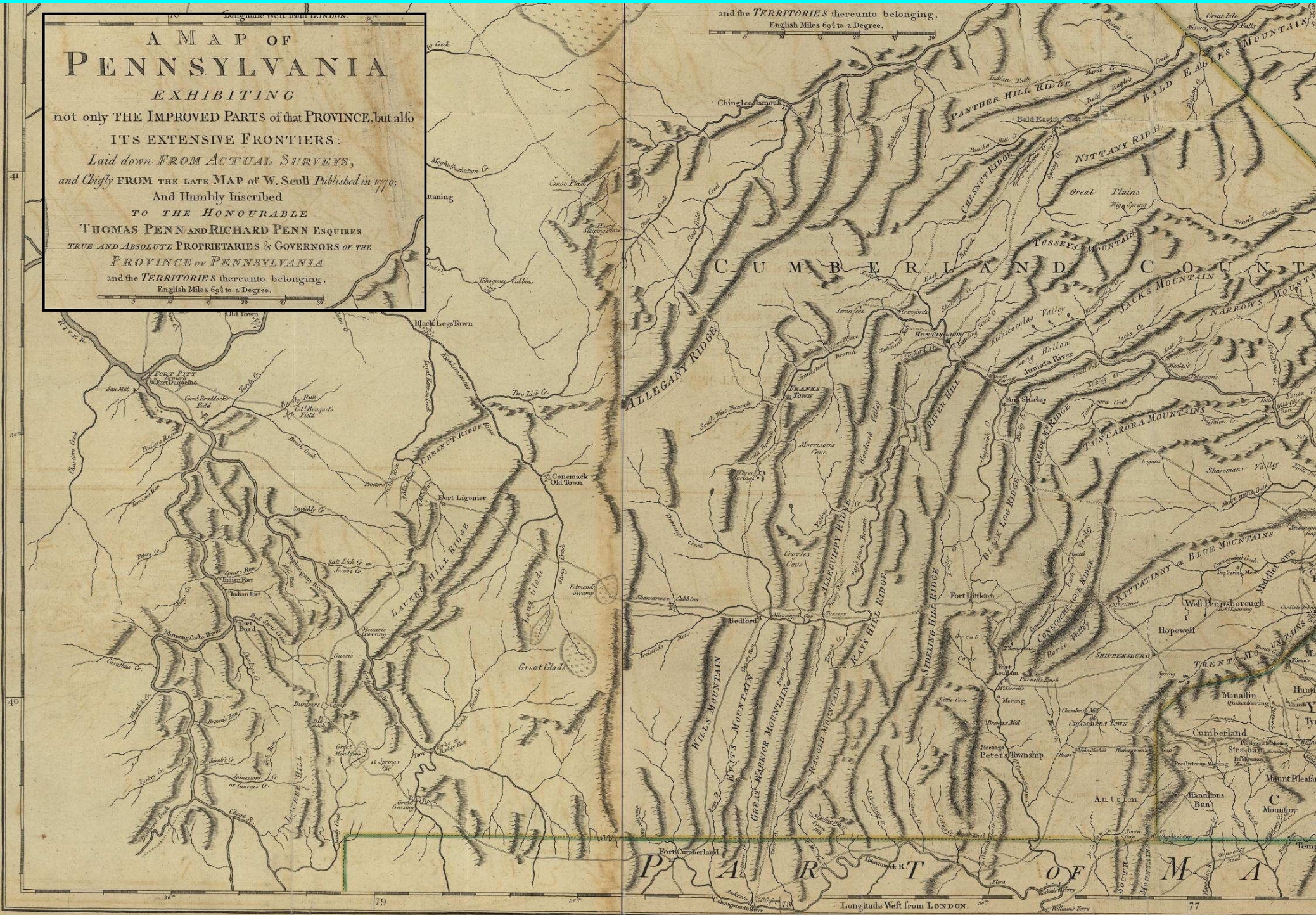
TRUE AND ABSOLUTE PROPRIETARIES & GOVERNORS OF THE

PROVINCE OF PENNSYLVANIA

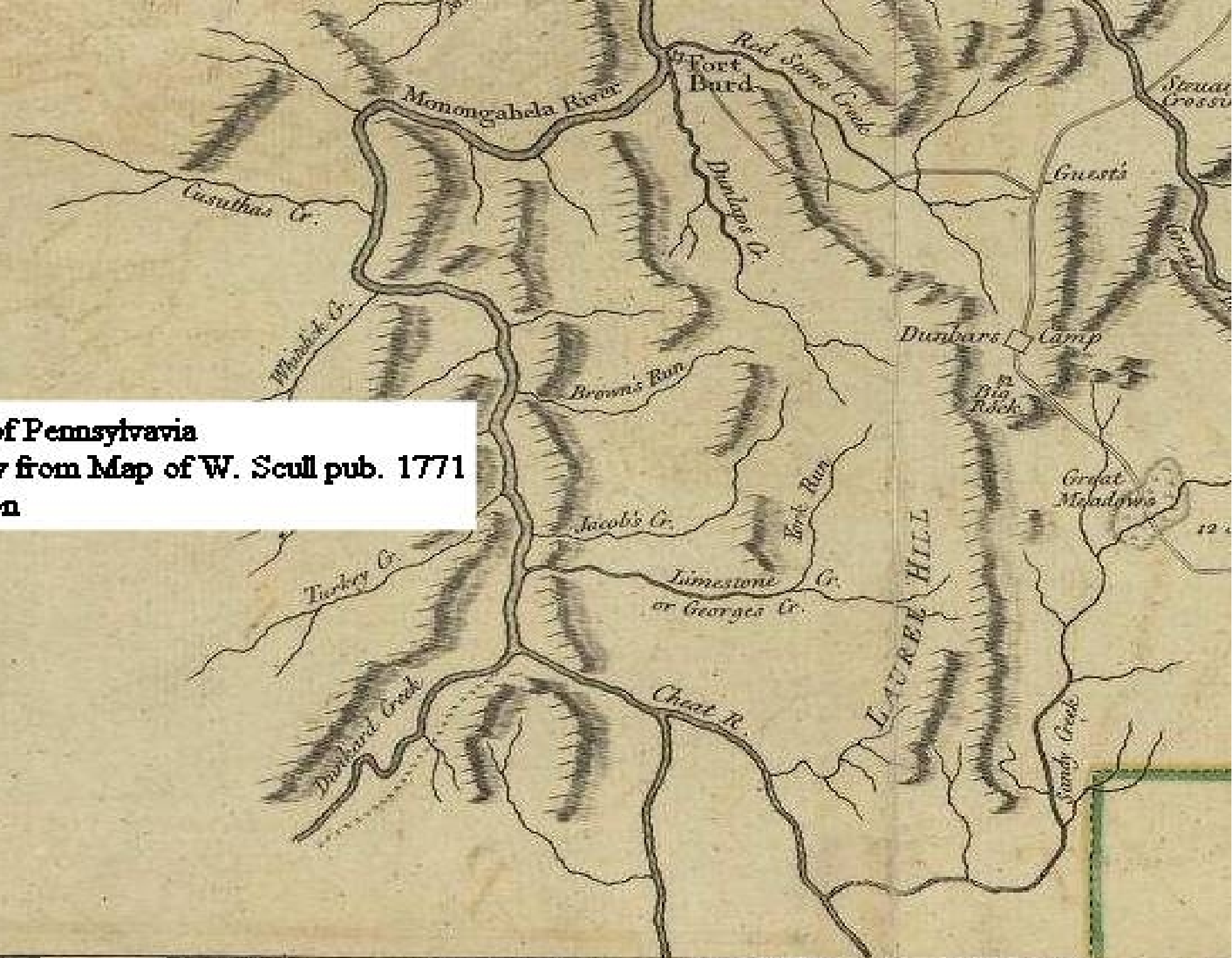
and the TERRITORIES thereunto belonging.

English Miles 69 1/2 to a Degree.

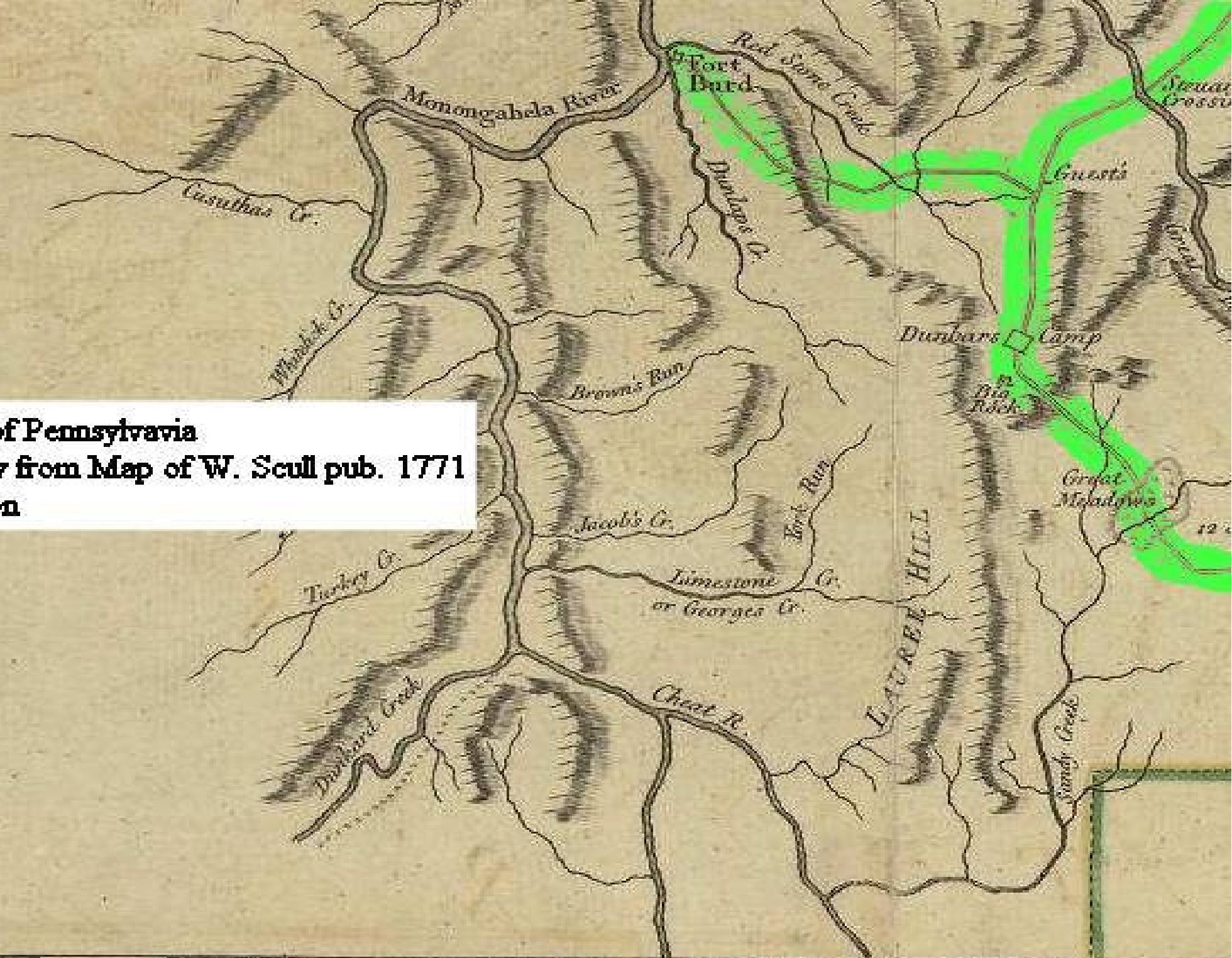
and the TERRITORIES thereunto belonging.  
English Miles 69 1/2 to a Degree.

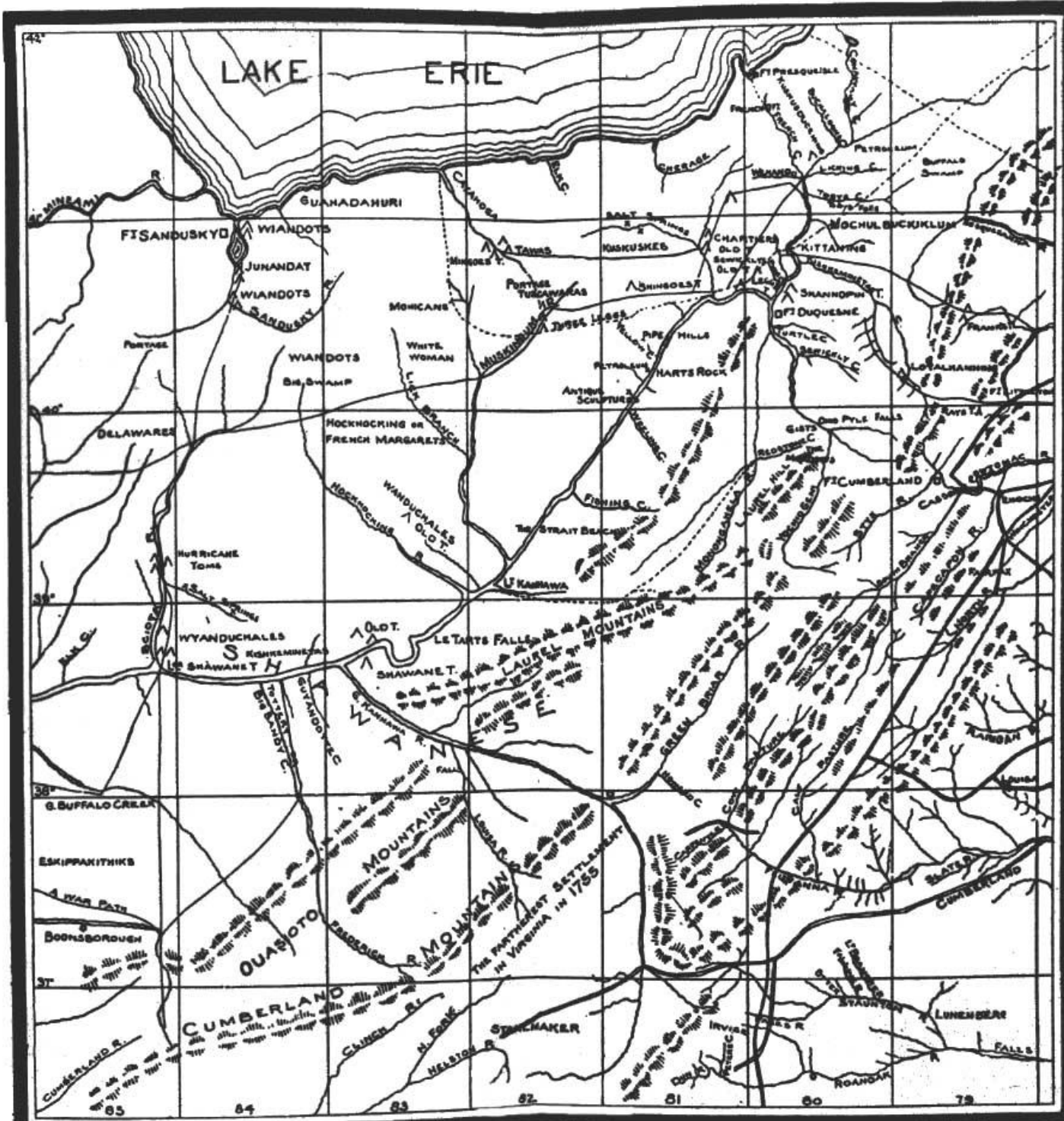


**Map of Pennsylvania**  
**Chiefly from Map of W. Scull pub. 1771**  
**London**



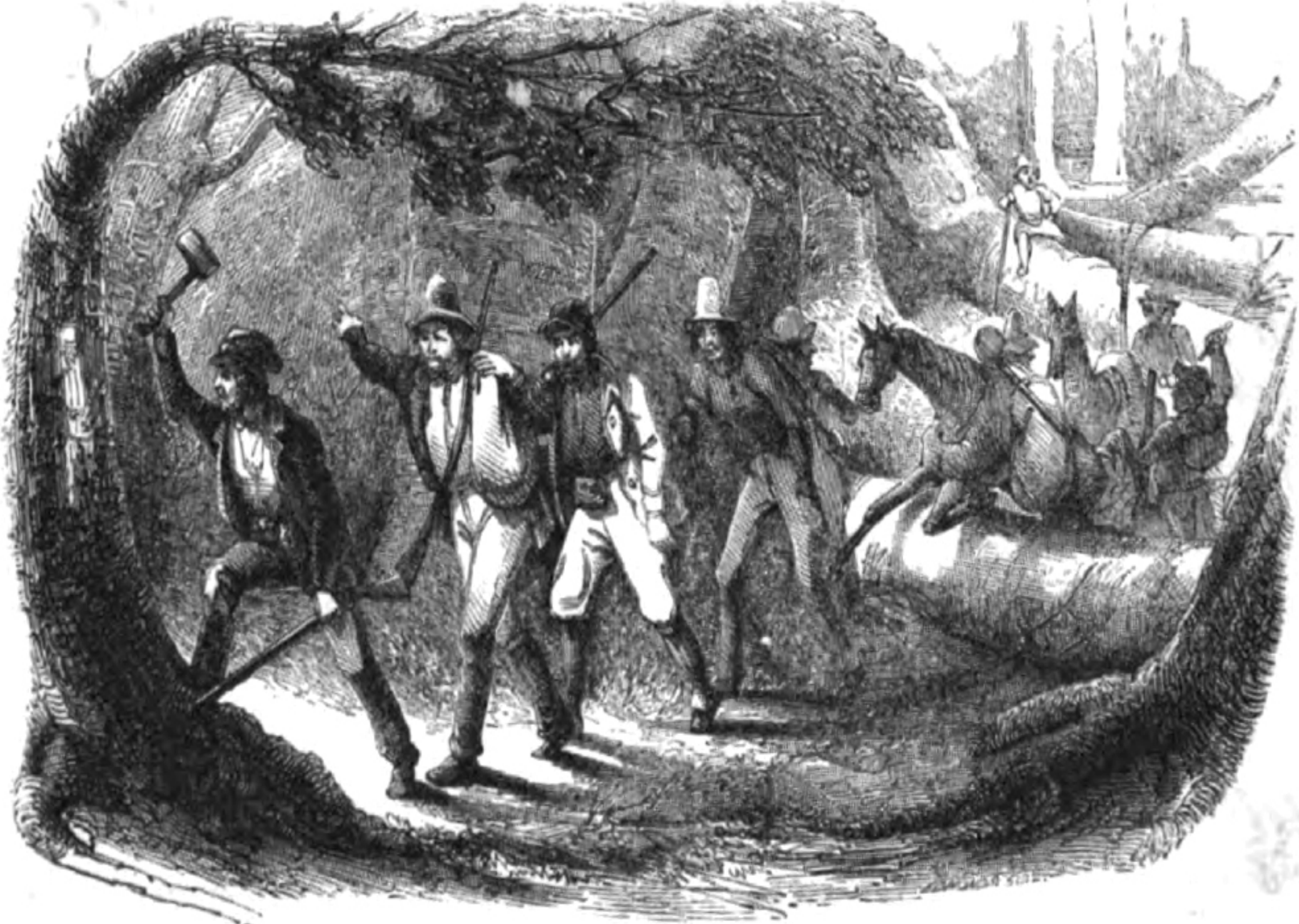
**Map of Pennsylvania**  
Chieffy from Map of W. Scull pub. 1771  
London





Lewis Evans' Map of 1775





**THE MARCH.**



THROUGH THE WOODS.

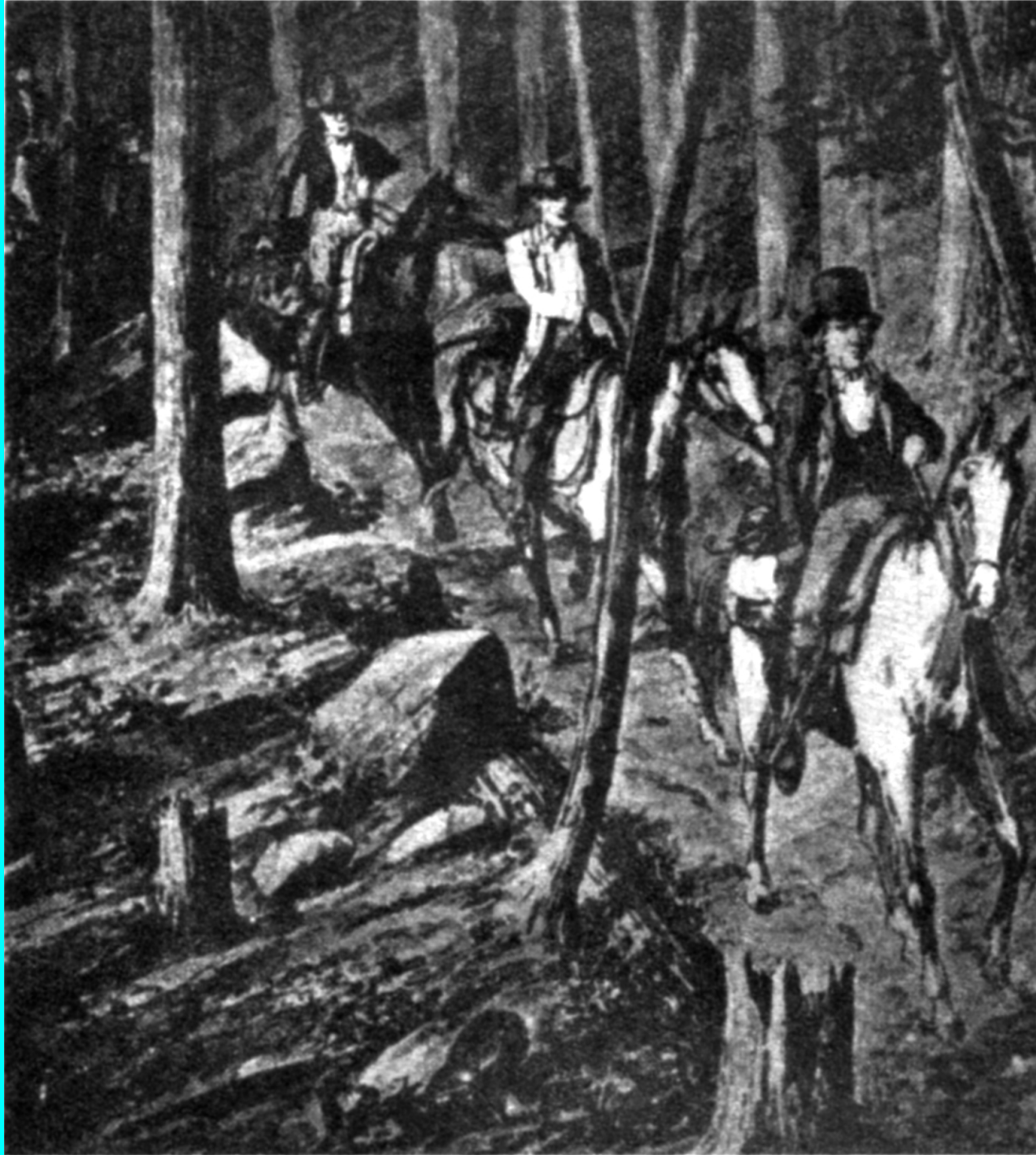


Fig. 49. Heavy traffic on a pioneer road.  
(From Newman's *History of Marion County*.)

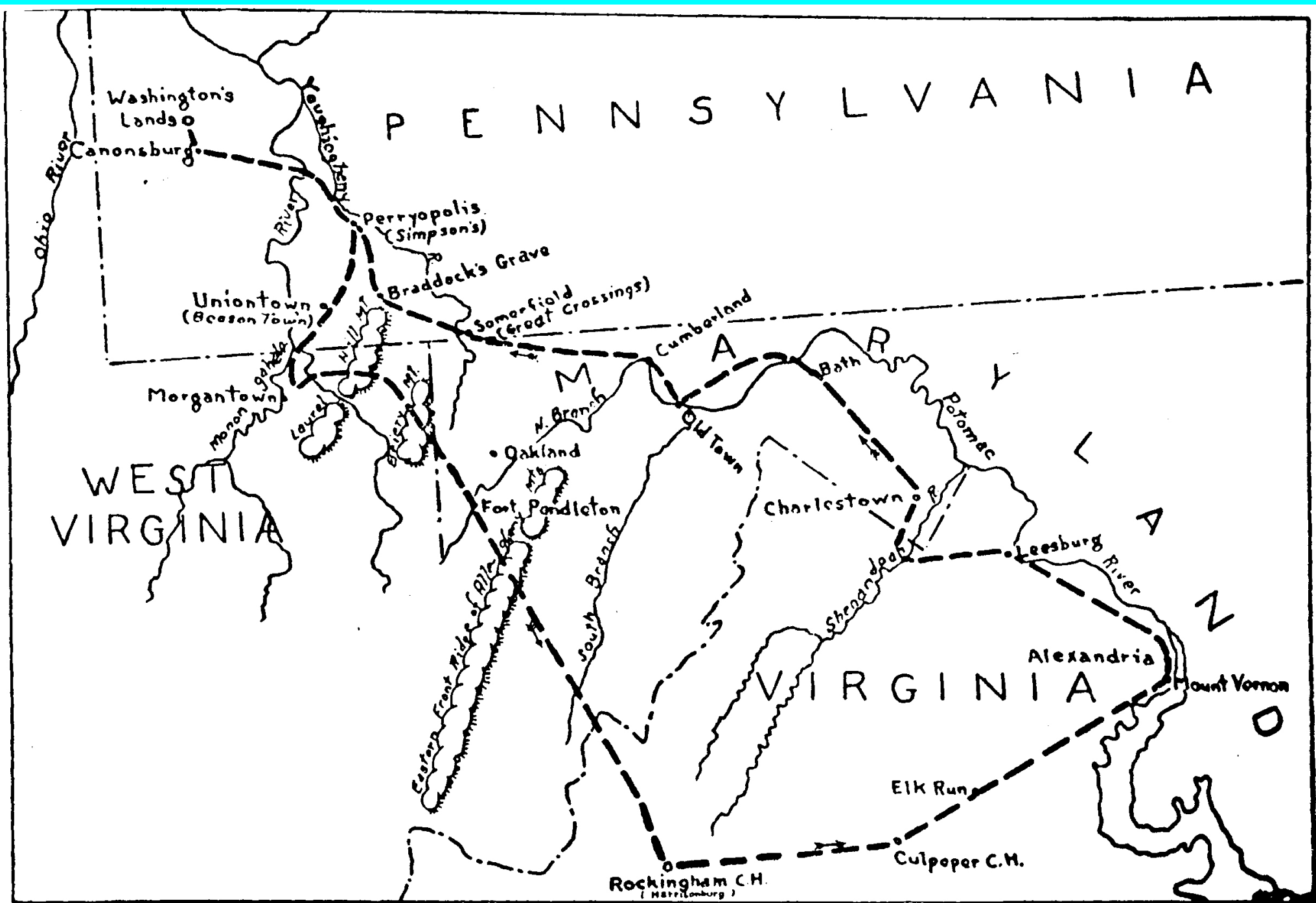
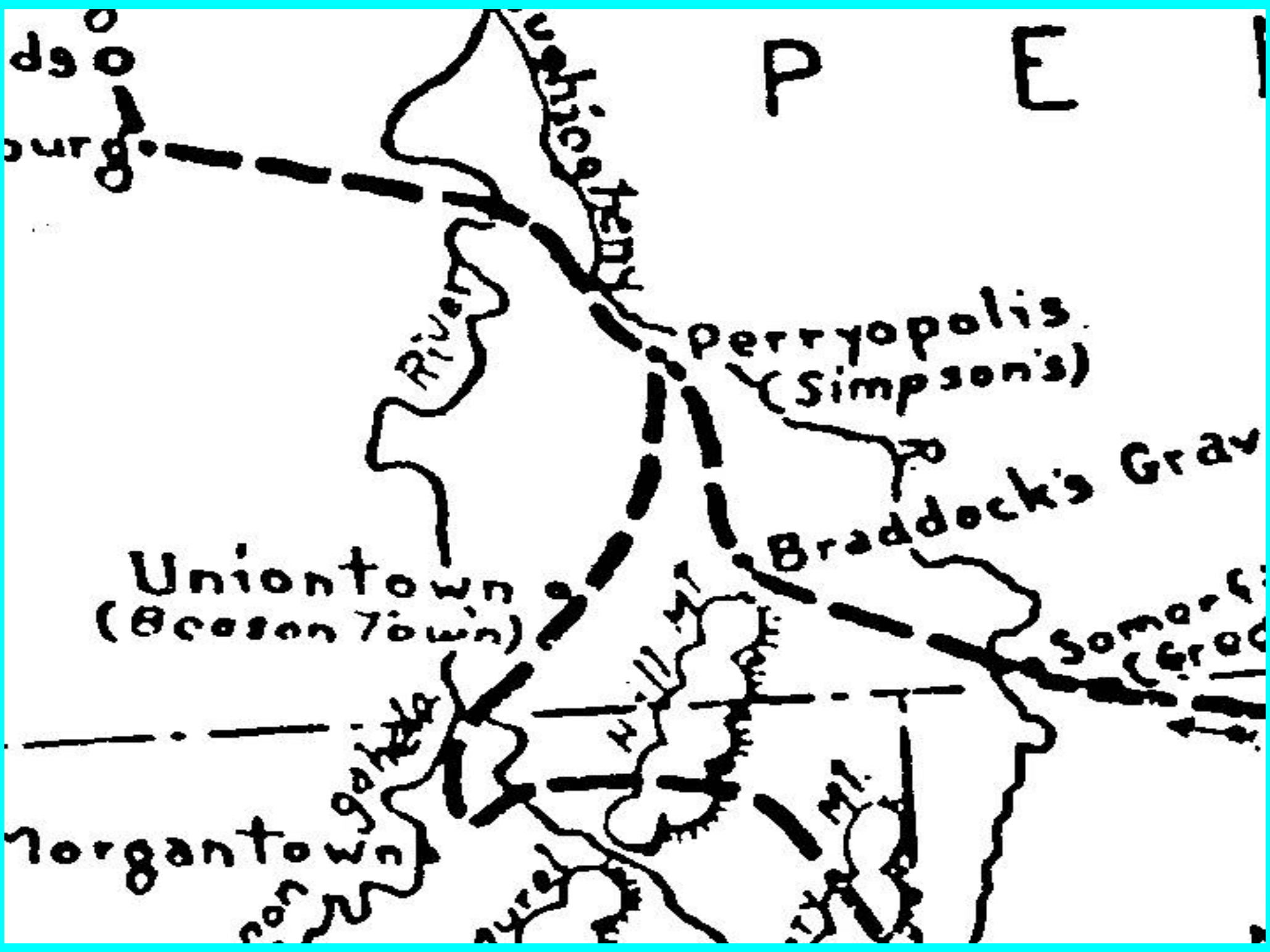


Fig. 24. Map showing Washington's western tour in 1784.  
 (Drawing by Robert Merricks for Ambler's *Washington and the West*.)

Given the State of the  
Transportation System, Why  
Would You be Coming From,  
or Going To, Monongalia  
County in 1784?



P E

River

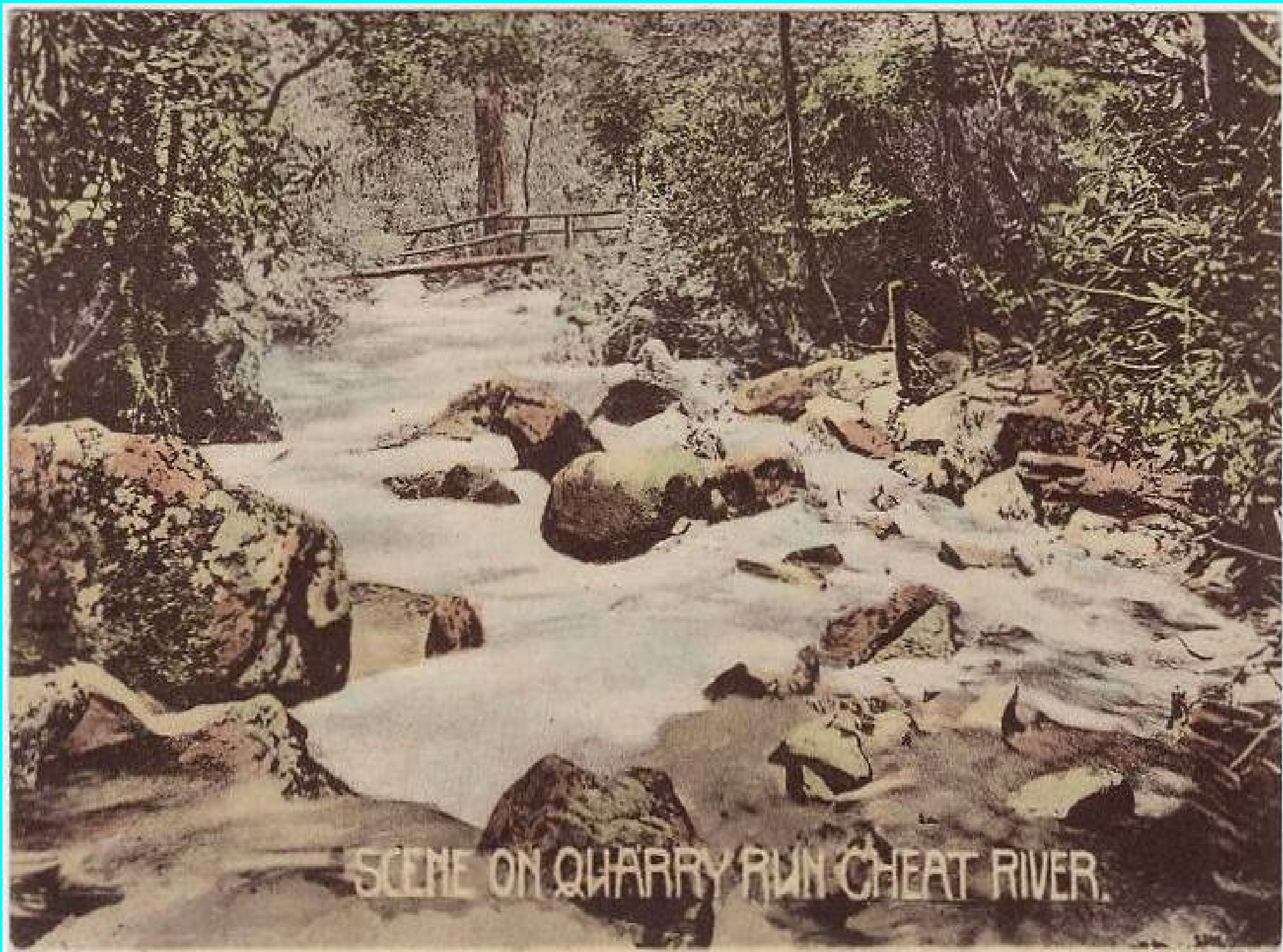
Perryopolis  
(Simpson's)

Braddock's Grave

Uniontown  
(Beeson Town)

Somers  
(Fred)

Morgan



SCENE ON QUARRY RUN CHEAT RIVER.

# Early Road Building in Virginia

In Virginia roads were the responsibility of the County Court. Counties were divided into road precincts, roughly corresponding to later magisterial districts. Each man between 21 and 50 years of age (except paupers) was obligated to work on the roads of his precinct at least 2 days between 1 April and 1 September. He could not be required to work more than 4 days except in case of an emergency. He could buy out at \$0.75 to \$1.25 per day. Road building days were frequently mostly a social event.

*Yesterday and Today (WV DOH)*

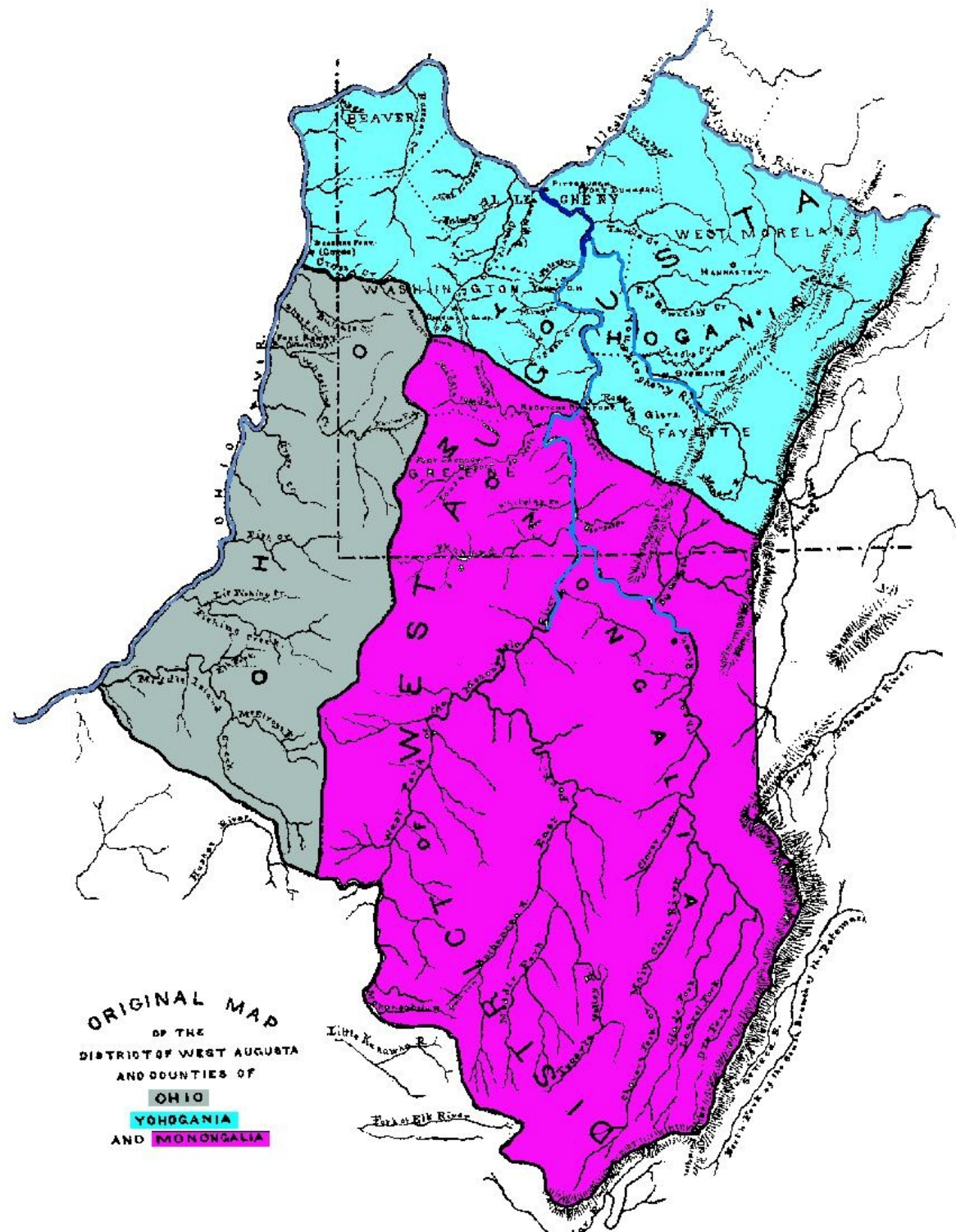
[Postmarked Wesleyville, PA - to Frank in Edinboro, Pa]

*At Home June 8th. [18]85*

*Dear brother*

*..... -- Our men folks are not very busy now.  
they have the planting all done with the exception  
of a few potatoes. and will commence to work out  
the road tax soon.....*

*Your sister Nellie*



ORIGINAL MAP  
OF THE  
DISTRICT OF WEST AUGUSTA  
AND COUNTIES OF  
OHIO  
YOHOGANIA  
AND MONONGALIA

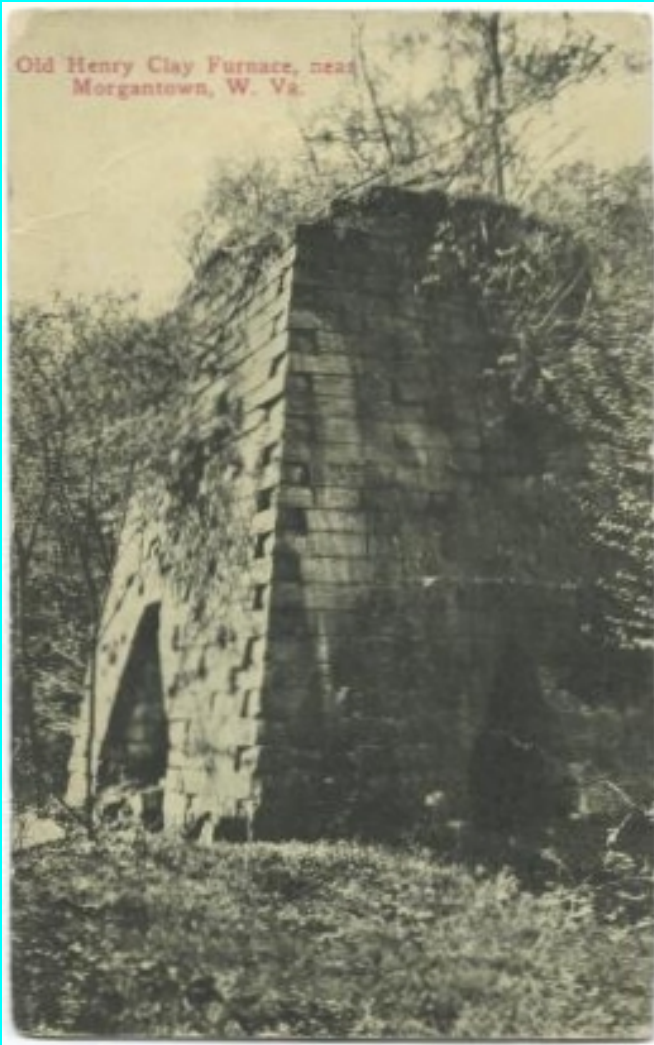
# Roads North & West

- *Boughter's Internal Improvements in Northwestern Virginia* - wagon road between Morgantown and Fishing Creek authorized in 1787 not completed
- New road authorized from Morgantown to mouth of Grave Creek, Moundsville in 1795
- both to be paid for from county taxes
- Apparently completed in 1804
- Core - Mt Morris road connecting with the Morgantown-Waynesburg completed along creek shortly after

*Chronicles of Core*

Given the State of the  
Transportation System, Why  
Would You be Coming From,  
or Going To, Monongalia  
County in 1820?

# The Iron Region



- Roughly 1810 through 1860
- Battles of Lake Erie & New Orleans
- Mostly charcoal & "bog iron" ore
- Water & later steam draft
- Up to 10 tons of iron per day
- 2000 people in Cheat valley, 500 in Morgan Town

Old Saw Mill on Cheat River,  
near Laurel Iron Works, W. Va.

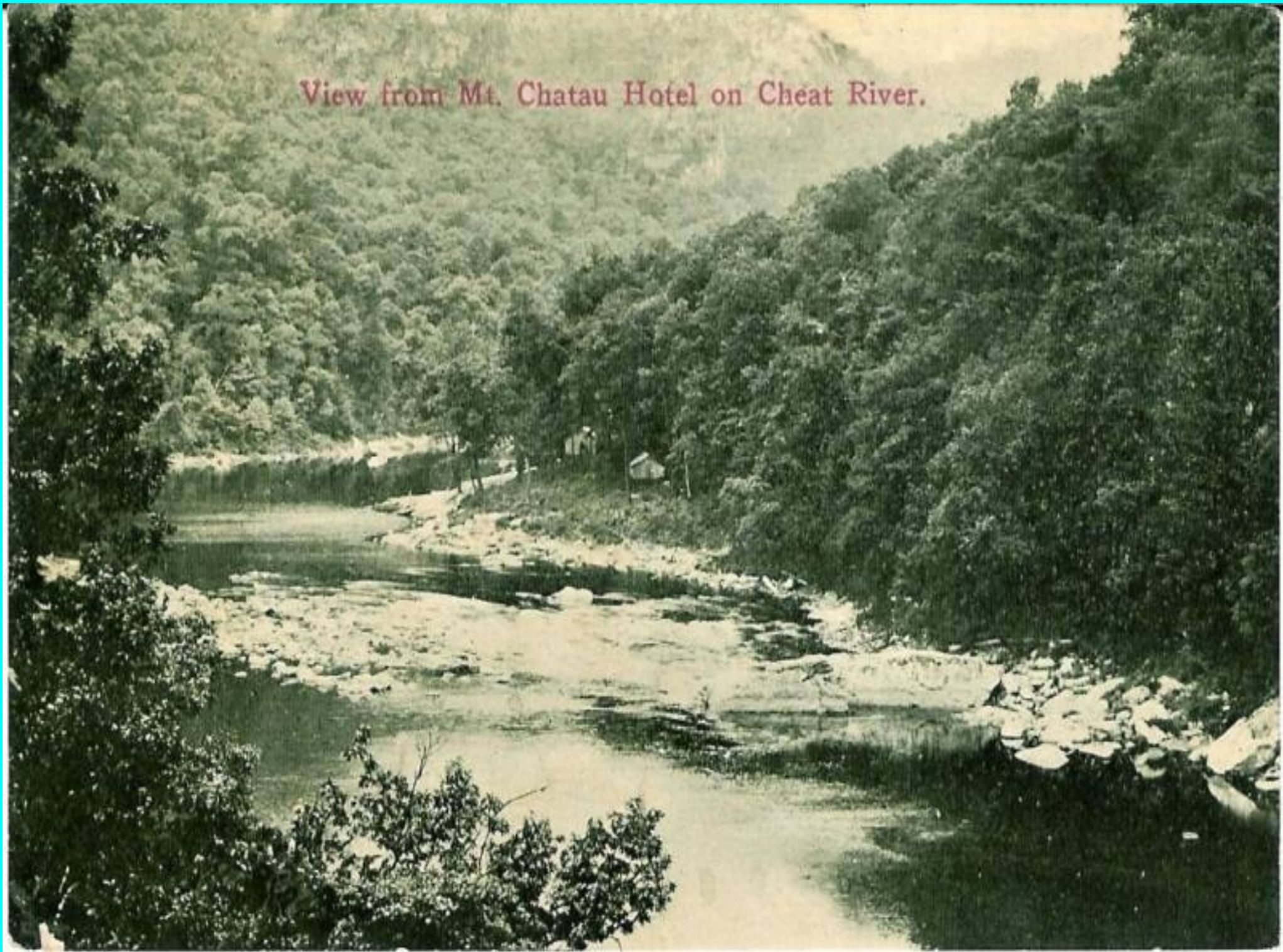


909,139

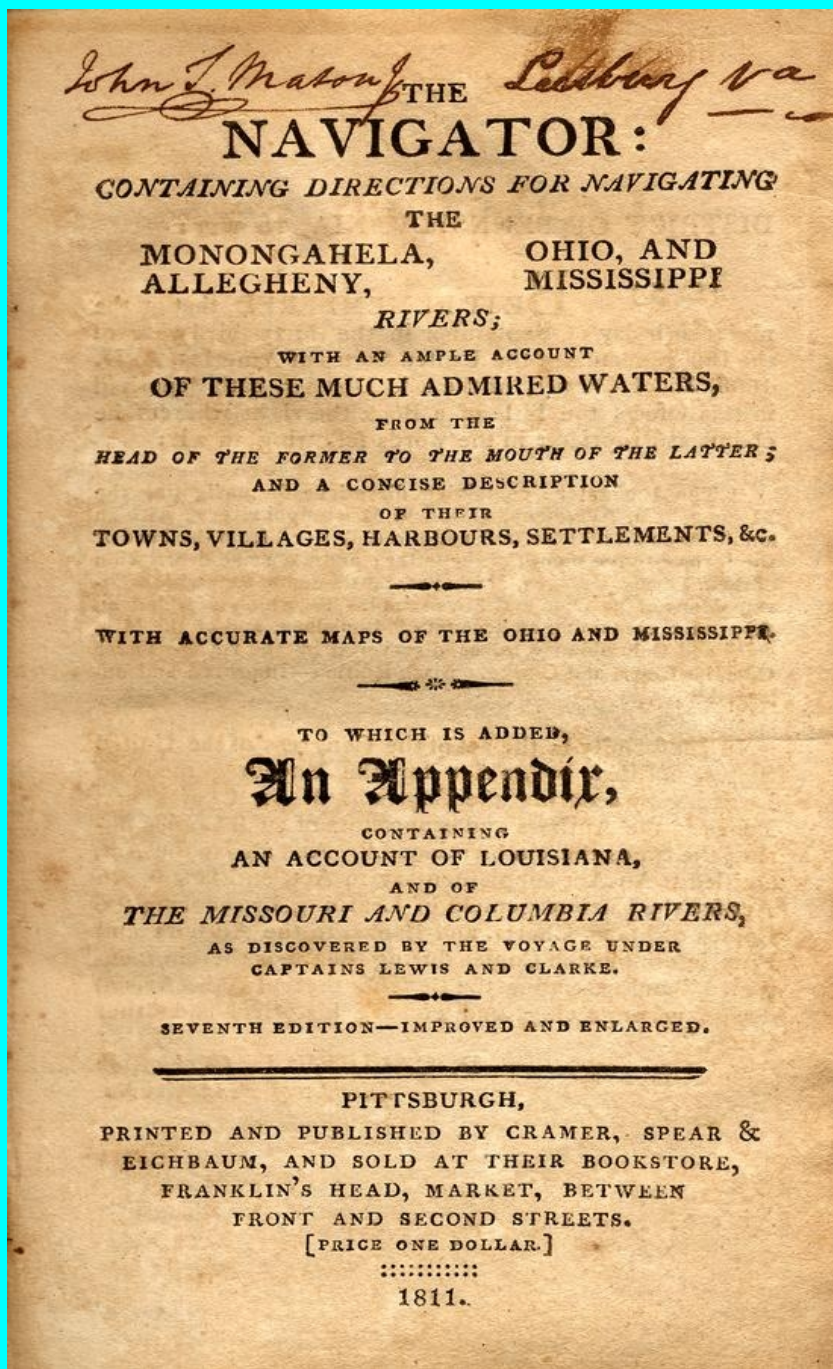
# Travel in Comfort – Go By Water



View from Mt. Chatau Hotel on Cheat River.



# Cramer's *The Navigator*



# OF THE MONONGAHELA,

## *ITS CHANNELS, SHOALS, RIPPLES, SANDBARS, TOWNS, &c.*

	<i>Mil.</i>	<i>Tot.</i>
<b>CLARKSBURGH,</b>		
Stands on the E. side of the river, 40 miles S. E. of Morgantown, is the chief town of Harrison county, Virginia, and contains about 50 houses, a courthouse and jail. From this to Morgantown the navigation of the river is very difficult in low water, and can be gone only in small crafts.		
<b>MORGANTOWN,</b>	40	40
Is situated on the E. side of the river, the capital of Monongalia county, Virginia, contains about 60 dwellings, a courthouse, and stone jail. It is 303 miles from Philadelphia, and about 63 by land above Pittsburgh.		
Boundary between Penn. and Vir.	4	44
Cheat river enters on the east side,	4	48
Four miles below the boundary between Pennsylvania and Virginia. At the mouth of this river is a long and ugly shoal, and the channel somewhat difficult. Here a person can be got to pilot you past the danger.		
This river rises in Randolph Co. Virginia, on the N. W. side of the Allegheny mountains, is about 200 yards wide at its mouth, and has some valuable mills and iron works on it. Dunkard's settlement is 60 miles up it, to which it is navigable for small crafts. There is a portage of 37 miles from Cheat to the Potomack at the mouth of Savage river.		
Dunkard's Creek, west or left side,	2	50
Here is a shoal but not very difficult.		
George's Creek, east or right hand side,	10	60
Just below the mouth of this creek lies		
<b>NEW GENEVA,</b>		
A small village, which had in its vicinity a valuable factory of glass, erected by Albert Gallatin, esq. It is now removed to the Greensburgh side, and carried on		

## CLARKSBURGH,

Stands on the E. side of the river, 40 miles S. E. of Morgantown, is the chief town of Harrison county, Virginia, and contains about 50 houses, a courthouse and jail. From this to Morgantown the navigation of the river is very difficult in low water, and can be gone only in small crafts.

**MORGANTOWN,**

40 | 40

Is situated on the E. side of the river, the capital of Monongalia county, Virginia, contains about 60 dwellings, a courthouse, and stone jail. It is 303 miles from Philadelphia, and about 63 by land above Pittsburgh.

Boundary between Penn. and Vir.

4 | 44

Cheat river enters on the east side,

4 | 48

Four miles below the boundary between Pennsylvania





Fig. 42. Flatboats loaded with rye whiskey proceeding down the Monongahela River. (From Felix Robinson's *Tableland Trails*, vol. 2; courtesy Joseph A. Gluck.)

# Steamboats

- ***New Orleans*** – 1811
- ***Reindeer*** - 1<sup>st</sup> to Morgantown – 29 April 1826
- ***Globe*** to Fairmont - \$1000 prize – 1850
- 1850 to 1872 steamboats reached Fairmont 10 times

# River Improvements

- Pennsylvania river commission – 1814
- Virginia Assembly – Monongahela Navigation Company – 1817
- Jackson's West Fork navigation
- Pennsylvania – Monongahela Navigation – 1841 Built Locks 1 & 2
- Second Virginia charter of a Monongahela Navigation Company - 1847

# The Turnpike Era

- The National Road c. 1812
- Northwestern Turnpike incorporated by VA Legislature in 1827 planned Winchester to Parkersburg - completed to Clarksburg & Parkersburg in 1838 at a cost of \$400,000
- Local turnpikes – Kingwood Pike, Brandonville Pike



The  
TOURIST'S POCKET MAP  
OF THE STATE OF  
**VIRGINIA**  
(EXHIBITING ITS)  
INTERNAL IMPROVEMENTS

Roads Distances &c. by

J. H. YOUNG.

PHILADELPHIA:

PUBLISHED BY

S. AUGUSTUS MITCHELL.

1836





Greencastle

Dunkard C.

PLAN

M O

Statler's T.

Middle T.

30  
Greenville

Morgan T.

M O

23

Smithfield

Buffalo C.

Middle town

Kingwood

Bigamon C.

Shipp's T.

Priddy T.

# Getting Out of Town: Morgantown's Interstate Connections



**OLLI @ WVU – Winter 2012**

**Wally Venable**

**Mechanical & Aerospace Engineering, WVU**