



“PowerPoint” at Maximum Speed

Spring 2013

Wally Venable

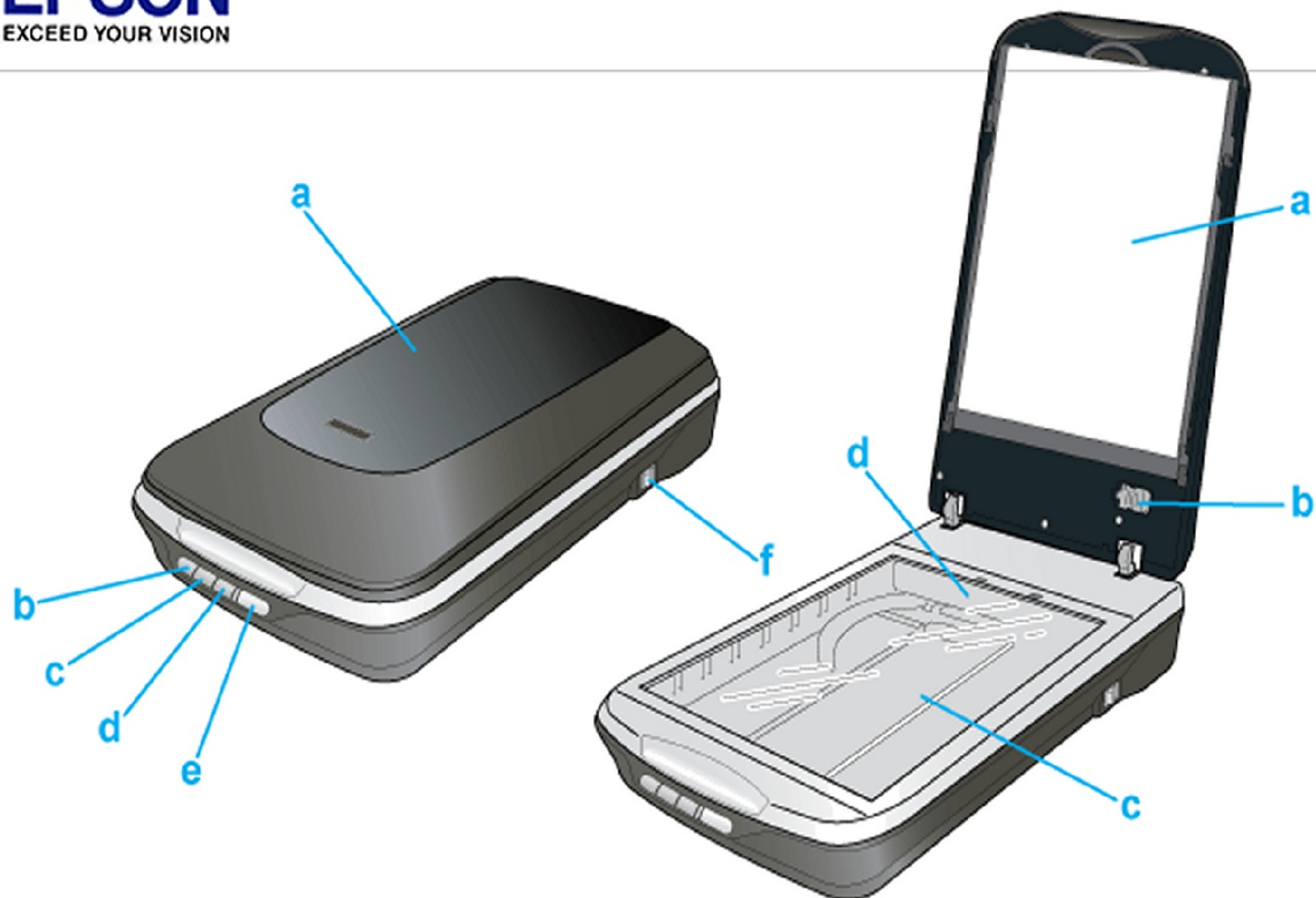
Thoughts About Pictures

- Computer screens are typically about 2000 by 1000 pixels
- Computer projectors typically show about 2000 by 1000 pixels
- We can create smaller files if we limit pictures to about 2000 by 1000 pixels
- 2000 by 1000 pixels is 2 megabytes
- Many cameras take 8 to 12 megabyte pictures
- Re-size pictures appropriately

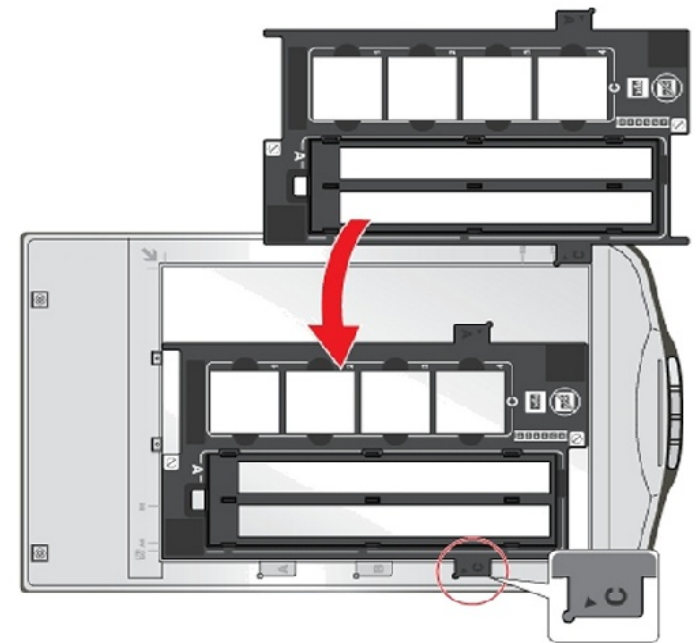
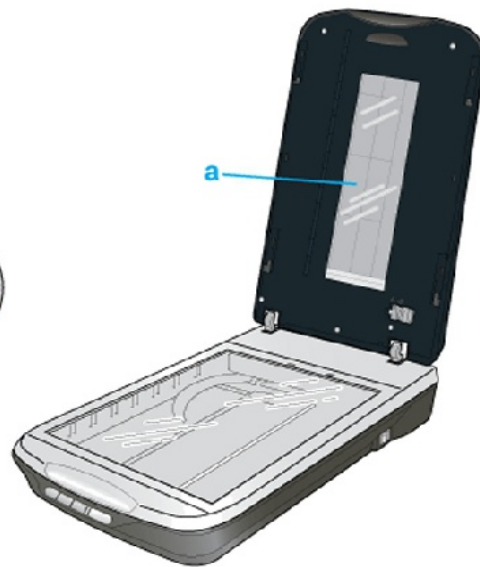
OOP Accepts Many Image Formats

BMP - Windows Bitmap (*.bmp)
DXF - AutoCAD Interchange Format (*.dxf)
EMF - Enhanced Metafile (*.emf)
EPS - Encapsulated PostScript (*.eps)
GIF - Graphics Interchange Format (*.gif)
JPEG - Joint Photographic Experts Group (*.jpg;*.jpeg)
MET - OS/2 Metafile (*.met)
PBM - Portable Bitmap (*.pbm)
PCD - Kodak Photo CD (768x512) (*.pcd)
PCD - Kodak Photo CD (192x128) (*.pcd)
PCD - Kodak Photo CD (384x256) (*.pcd)
PCT - Mac Pict (*.pct;*.pict)
PCX - Zsoft Paintbrush (*.pcx)
PGM - Portable Graymap (*.pgm)
PNG - Portable Network Graphic (*.png)
PPM - Portable Pixelmap (*.ppm)
PSD - Adobe Photoshop (*.psd)
RAS - Sun Raster Image (*.ras)
SGF - StarWriter Graphics Format (*.sgf)
SGV - StarDraw 2.0 (*.sgv)
SVG - Scalable Vector Graphics (*.svg)
SVM - StarView Metafile (*.svm)
TGA - Truevision Targa (*.tga)
TIFF - Tagged Image File Format (*.tif;*.tiff)
WMF - Windows Metafile (*.wmf)
XBM - X Bitmap (*.xbm)
XPM - X PixMap (*.xpm)

Let's Talk About Cameras & Scanners



EPSON PERFECTION V500 PHOTO



35 mm Film Strip&Mounted Slide

48-bit,3600 dpi optical resolution

**Scan color or monochrome film
and mounted slides**

One button scanning

One of the fastest scanner available

**Hi speed scan and preview(0.5sec.),
Conventional film scanner(over 1 minute)**



2

film cover

5

megapixel

2.0

USB

Filmimager

Capturing Web Images

- Right-click image
- Use Save image as ..

Screen Capture

- Press print screen key [Prt Scr]
- Open graphics editing program
- Use **Paste** or **Paste as new image**
- You can do amazing things with web images with this technique if you have patience.
- It is also useful with **.PDF** files

Thoughts About Image Processing

Enlarging & Processing May Improve Pictures

BMP - Windows Bitmap (*.bmp)

DXF - AutoCAD Interchange Format (*.dxf)

EMF - Enhanced Metafile (*.emf)

EPS - Encapsulated PostScript (*.eps)

GIF - Graphics Interchange Format (*.gif)

BMP - Windows Bitmap (*.bmp)

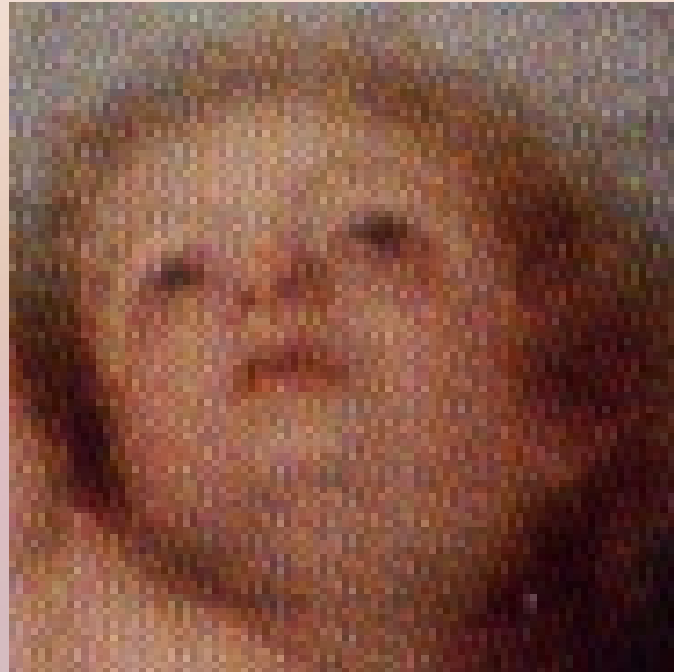
DXF - AutoCAD Interchange Format (*.dxf)

EMF - Enhanced Metafile (*.emf)

EPS - Encapsulated PostScript (*.eps)

GIF - Graphics Interchange Format (*.gif)

Which Is Best?



Which Is Best?



800 dpi scan
81 kB



300 dpi scan
11 kB



Blurred & 200 dpi
4 kB

